

LM Series

Large Linear/Louvre Actuator

Force 1000N/2000N Max Stroke 1000mm



Features

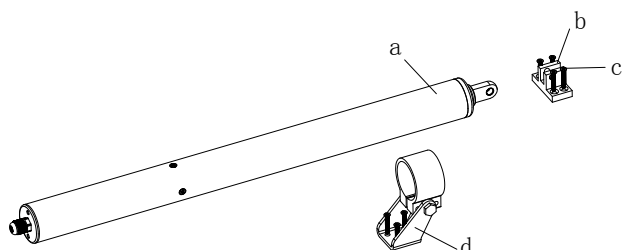
- Can be used for openings for smoke exhaust and daily natural ventilation
- Suitable for top/bottom/side hung window/skylight and driving louvres as well
- In accordance with EN12101-2 standard
- Housing material: Al alloy; pulling shaft material: stainless steel
- Electronic overload cutoff
- Multi bracket options for different installations
- Lifetime: more than 30,000 times of opening and closing
- Standard housing finish is anodized silver, other colors are available by painting
- Multi actuators synchronization is available with an extra external synchronizer

a. Actuator

b. Sash connector

c. Self-tapping screw

d. Bracket



LM Series

Large Linear/Louvre Actuator

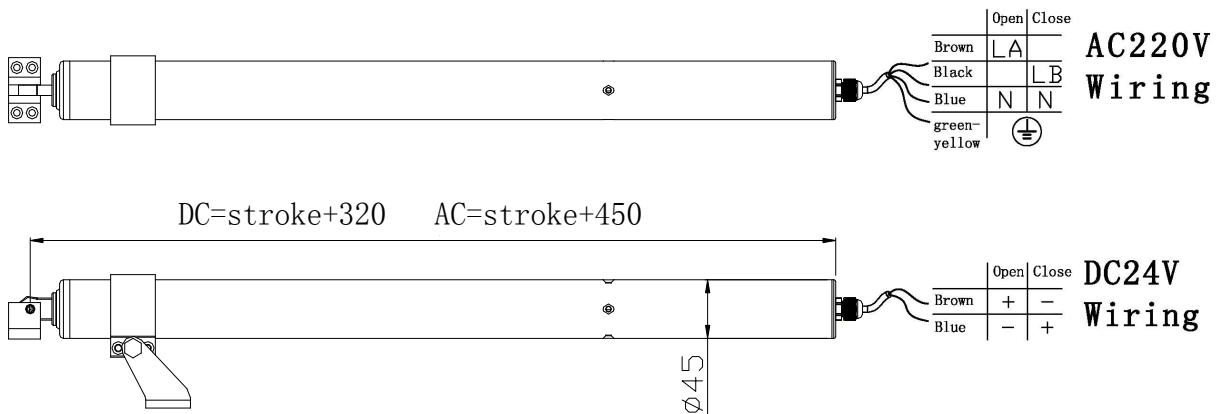
Force 1000N/2000N Max Stroke 1000mm

Parameters

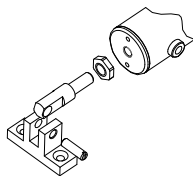
	24V-1000N	24V-2000N	220V-1000N	220V-2000N
Voltage	DC24V±10%	DC24V±10%	AC220V±10%	AC220V±10%
Cutoff Current	1.0A	1.6A	0.15A	0.2A
Force	1000N	2000N	1000N	2000N
Speed	6mm/s	6mm/s	6mm/s	6mm/s
Stroke	50~1000mm	50~1000mm	50~1000mm	50~1000mm
Temperature	-20~75℃	-20~75℃	-20~75℃	-20~75℃
Protection Class	IP65	IP65	IP65	IP65
Electric Connection	2 wires	2 wires	3 wires + earth	3 wires + earth
Limit Stop	Electronic	Electronic	Electronic	Electronic

Dimensions in mm

Wiring Diagram

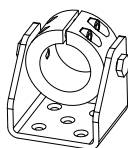


Optional Accessories



LM-T13

fixed on the end



LM-T11



LM-T9



LM-T14

used in pairs